

*Bring Science and Technology to Healthcare*



# ANATOM 16

Multi-slice Helical CT Scanner

Pioway Medical Lab Equipment Co., Ltd.





## Advanced Performance



### World Leading Gantry Technology

- Higher Rotation Speed
- Faster Dynamic Response
- Smaller in Dimension & Weight



### Highly Integrated Data Acquisition System

- Number of Detectors per Row 896
- Number of Detector Units 21504
- Minimum Slice Thickness 0.625mm



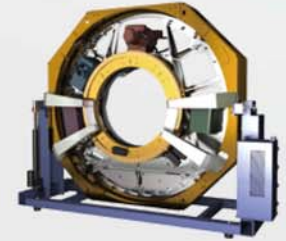
### Perfect X-ray Generator System

- Power of Generator 60kW
- Tube kVp Range 80-140kV
- Tube mA Range 10-500mA

# N Non-contact Slip-ring Designed

## Innovative PowerLink™ Gantry Technology

- Never attrited and non-contact slip ring design
- Full integration in data communication and transmission
- Integrated control in gantry rotation





## Advantage of Adose™

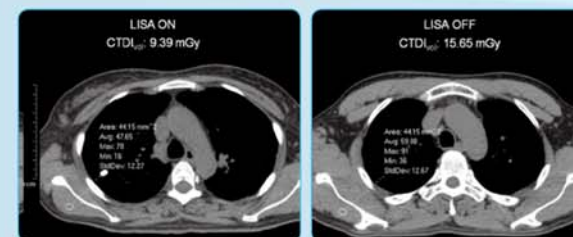
Tube current is automatically controlled according to the features of organs to reduce the radiation dose effectively on the basis of ensuring images quality.



# T Technology of LISA™

It is the latest and advanced technology for reducing dose, which can ensure high clinical image quality with large dose reduction to the patient, even under the condition of 60%~70% normal dose.

Pediatrics exclusive scanning solutions provides precise scan protocol for children, it offers dedicated scan parameters according to physical characteristics of children to reduce the radiation dose.





## Outstanding Clinical Images

Head: Conventional, Paranasal Sinus, MPR, SSD, VR, CTA, HD Inner Ear

Cervical Vertebra: Conventional, MPR, VR, CTA

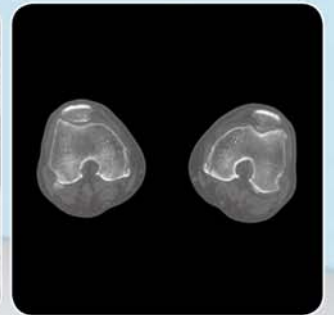
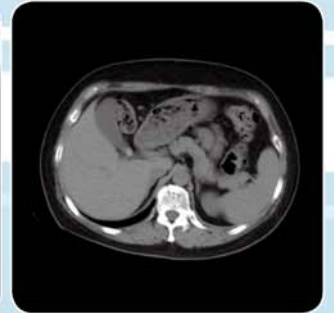
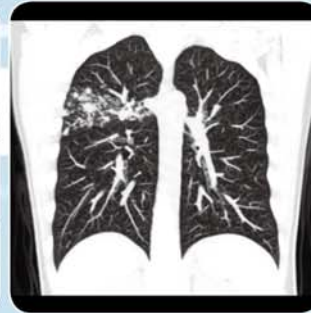
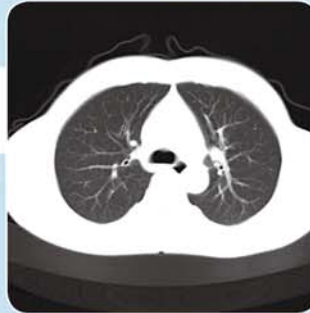
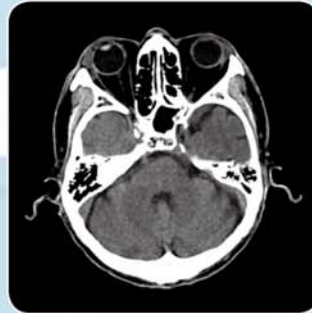
Chest: Conventional(Lung Window, Mediastinal Window), MPR, VR, MinIP

Abdomen: Conventional, Enhancement(3 Phases), MPR, VR, CTA

Extremities and Joints: Conventional, MPR, VR



# O Outstanding Clinical Images





# M Minimum Maintenance Costs

- Lower dose, lower consumption
- Non-contact power transfer, without carbon brush consumption

