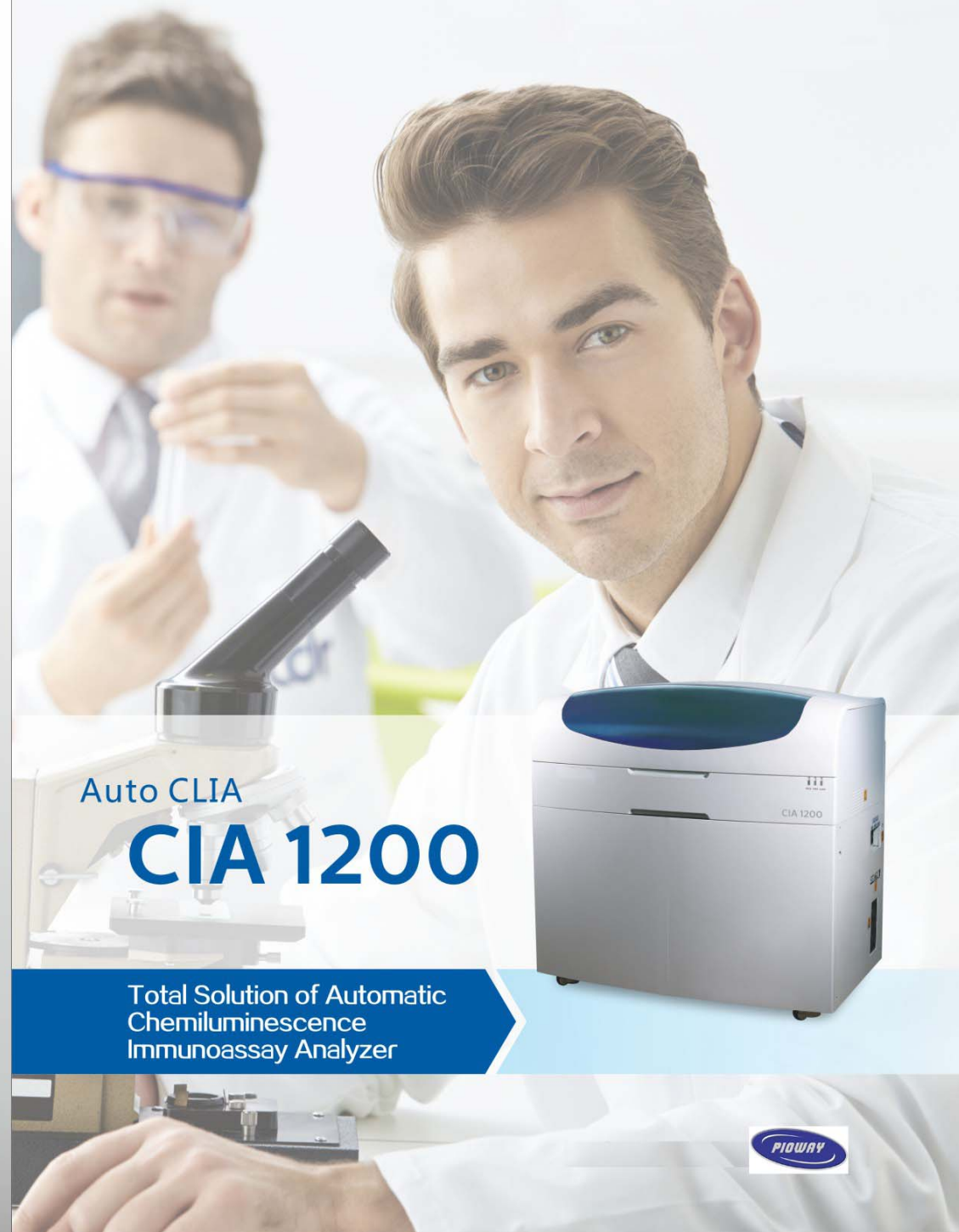


# Auto CLIA CIA1200

## Main Parameters

- Principle: Magnetic microbeads CLIA
- Throughput: 120 T/H
- Time to first result: < 15 min
- Sample tube size: 75mm/100mm
- Auto re-test: available
- Internal master curve, 2-point/6-point calibration
- Barcode scanning to identify and locate reagent/sample



## Auto CLIA CIA 1200

Total Solution of Automatic  
Chemiluminescence  
Immunoassay Analyzer



# Profession & Leading

## CIA1200 Auto CLIA

### Advanced Detection Principle

CLIA(Magnetic solid phase separation)—Combination of magnetic solid phase technology and Chemiluminescence technology  
Wider linear range, higher sensitivity and test speed, fully meet the clinical need

### High Throughput, Short Assay Time

120 T/H, time to first result: 15minutes

### Specially Designed Probe

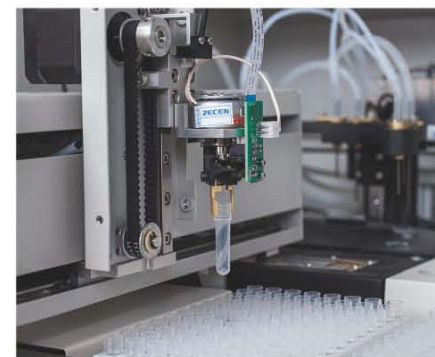
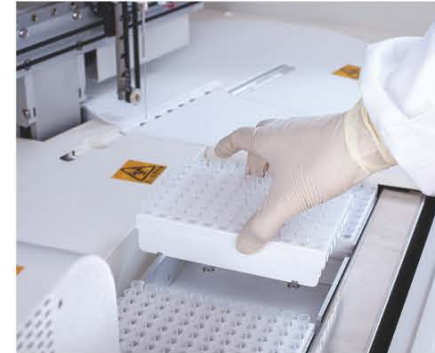
Sidewall opening of the probe ensures the solid phase completely separate from the free phase

### Flexible Detection Mode

One-step, two step can be truly achieved, ensure the accuracy of the results

### Streamlined Operating System

User-friendly Interface, simple and convenient  
Intelligent Calibration&QC  
LIS connection  
Data editing, storage, query and printing





## Intelligent and Precise Assay You Deserve It

### Flexible Sample/Reagent Tray

- Flexible Sample/Reagent Tray
- Patented Sample/Reagent tray, simple mechanism, low failure rate
- Sample positions: 60, continuous loading
- Reagent positions: 20, Max 20 items can be tested one time
- Barcode scanning to identify the location of sample/reagent, avoid human error
- Reagent storage and expiration reminder, avoid waste
- Auto mixing for the magnetic beads reagent
- Refrigerated function, ensure best condition of sample/reagent STAT



### 4-hour Unattended Reaction tubes Loading Area

- Three-dimensional movement for mechanical finger, intelligent and efficient
- Move, load and discard the reaction tubes automatically
- Reaction tubes: 384 pcs, extendable
- 4-hour unattended operation



### High Precision Probe

- Sampling path moves in straight line, no throwing off
- Teflon coating, waterfall cleaning, low carry-over
- Anti-collision, clot detection, liquid detection



### Precise Temp-control Incubation Tray/Complete Separation Cleaning Tray

- Incubation tray:  $37 \pm 0.1^\circ \text{C}$ , ensure complete reaction
- Cleaning tray: 4-step auto cleaning, completely separate the solid phase from the free phase



### Innovative FITC- Separation Technology by Magnetic Beads Binding with Anti- FITC

- Tubular chemiluminescence technology, Flexible
- Antibody and antigen reacts in liquid status, full time and complete reaction
- Only 5 minutes for magnetic beads involved in the reaction, avoid the non-specific adsorption
- Superparamagnetic beads, solid phase easily separates from free phase
- Strict process control, small intra-batch differences

### Innovative AP-APLS Chemiluminescence Technology

- High sensitivity, no less than  $10^{-21}$  per unit
- Innovative APLS substrate, fast reach plateau period
- Long plateau period, stable signal, easy detection
- Monocomponent non-oxidizing substrate, easy operation, long validity



**TEST MENU**

**Thyroid**

- Tt3
- FT3
- TT4
- FT4
- TSH
- TGAb
- TPOAb
- TG



**Glycometabolism & Hypophyseal Hormone**

- C-P
- INS
- hGH



**Inflammation Monitoring**

- PCT
- CRP



**TORCH**

- TOXO IgG
- TOXO IgM
- RV IgG
- RV IgM
- CMV IgG
- CMV IgM
- HSV-1 IgG
- HSV-1 IgM
- HSV-2 IgG
- HSV-2 IgM



**Fertility**

- E2
- PROG
- TESTO
- PRL
- FSH
- LH
- Total-hCGβ
- F-hCGβ
- fE3



**Hepatic Fibrosis**

- III NP
- CIV
- LN
- HA



**Cardiac**

- cTnI
- HFABP
- HCY
- NT-proBNP
- D-Dimer



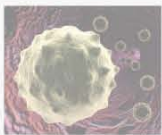
**Infectious**

- HBsAg
- HBsAb
- HBeAg
- HBeAb
- HBcAb
- Anti-HCV
- Anti-HIV
- Anti-TP



**Tumor Markers**

- AFP
- CEA
- FTN
- CA125
- CA15-3
- CA19-9
- CA50
- PSA
- FPSA
- SCC
- NSE
- HE4
- S100
- CA72-4
- CA242
- CYFRA21-1



**Bone Metabolism**

- 25-OH-Vit-D
- BGP
- iPTH



**Kidney Function**

- β 2-MG
- Cys-C
- RBP
- NGAL



**Gastric Mucosa Function**

- PG I
- PG II

