



ECG-1101

Digital Single Channel ECG Series

Features

- Light in weight, compact in size
- Three kinds of operation mode: Automatic, Manual, Analysis
- Standard lead mode or European lead mode available
- Detection and alarm of Lead-off, No Paper or No Battery
- Built-in ECG simulator
- Automatic adjustment of baseline for optimal recording
- RS232 communication interface for linking to special network or setting up of ECG Database
- Option Blue Tooth interface
- Automatic measurement, option interpretation function in Class G machine
- Display of ECG waveform on LCD (available in Class C and G machines)
- Build-in Help Function: electrode positioning, ECG basic knowledge, dispose of common Breakdown etc. (available in Class G machine)
- Clinical information such as patient ID, name, sex, age, height, weight, drugs and hospital name can be input (available in Class G machine)
- Case Storage function: 15 cases can be saved in the machine or as much as 150 cases in a SD card. Saved ECG waveforms can be cine-looped, printed out or transferred to PC. (available in Class G machine)

... explosive hazard if used in presence of flammable anesthetics.
Do not remove cover.
... servicing to qualified service personnel.
... protection against fire hazard. Handle only with care.
... and spring of use.

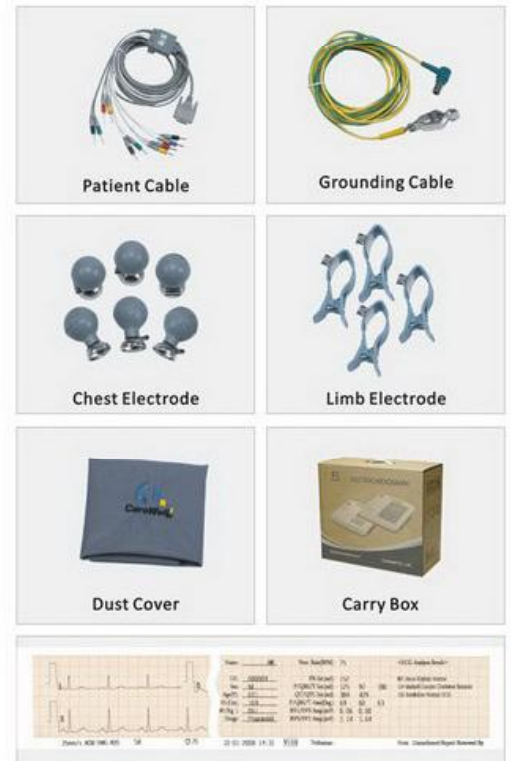


ECG-1101 Digital Single Channel ECG series



Technical Specifications

Safety Standard:	IEC Class I, type CF
Acquisition Mode:	12 lead acquisition simultaneously
Input Circuit:	Floating, protection against defibrillator and pacemaker
A/D Converter:	18 bit
Time Constant:	≥3.2s
Frequency Response:	0.05Hz ~ 150Hz
Sensitivity:	2.5, 5, 10, 20 (mm/mV), Auto
Input Impedance:	≥50MΩ
Input Circuit Current:	≤50nA
Calibration Voltage:	1mV±2%
Noise Level:	<15μVp-p
Anti Baseline Drift :	Automatic
Filter:	EMG Filter: 35Hz~45Hz (-3dB) ADS Filter: Auto(0.15-0.50Hz) HUM Filter: 50Hz/60Hz (-20dB)
CMRR:	>100dB (with AC filter)
Patient Current Leakage:	<10μA
Paper Speed:	6.25/12.5/25/50 mm/s
Recording Paper:	50mm(width), 20m/30m(length), roll/Z-fold
Power Supply:	AC: 110/220V, 50/60Hz; 85V~265V(Option) DC: 12V, built-in rechargeable battery
Dimension:	295mm×260mm×60mm; 400mm×180mm×355mm(Carton)
Net Weight:	2.5kgs
Gross Weight:	4.5kgs



LCD Specification	ECG-1101	LCD Type	Display	HELP
	Class B	20*2 Character	Character	NO
	Class C	160*32 Graphic	waveform	NO
	Class G	3.8 inch Graphic	waveform	YES