

ECO 3 EXPERT

Black & White with Doppler,
Stunningly Good.



Advanced Imaging Technologies

ECHO

- Advanced technologies:
 - i-Image(Intelligent image optimization)
 - THI(Tissue Harmonic Image)
 - SRA(Speckle Reduction Algorithm)
 - Compound imaging
- Full digital beam-former
- Trapezoid
- Automatic PW trace
- Chroma
- Full screen display mode
- AIO(Automatic image optimization)



Ergonomics

- Rotatable LED (0~30°) : tailor to different viewing angles
- Ultra-compact & Ultra-light
- Easy to carry
- Keyboard : For easy and quick access
- Dedicated cart TR 9000
- Streamlined workflow

Economic

- The latest platform & more advanced chip-set: brings you better image quality and features at less cost in a more compact box
- Support PC printer, reduce investment & day to day paper cost
- 8G memory card
- 320G harddisk (option)
- Vehicular Charging

ECO-friendly

- Less radiation
- Less power consumption
- Longer usage life:LED
- Longer battery standby time: >2 hours



Ultra-compact



Carry case (BG-100)



Dual probe-connectors



Chargeable from your car



- Full Screen display mode

Excellent PW resolution and automatic PW trace measurement will greatly improve the diagnosis confidence by delivering both qualitative & quantitative results.

Streamlined workflow, Easy diagnosis !

ONLY **6** STEPS!!



1. ONE KEY to select the desired application with automatic preset



2. ONE KEY to optimize the image automatically.
AIO(Automatic image optimization)



3. ONE KEY to save still image and CINE loop



4. ONE KEY to measure



5. ONE KEY to make report



6. ONE KEY to print to PC or video printer (see page 4 option)



Liver,B Mode



Kidney,B Mode



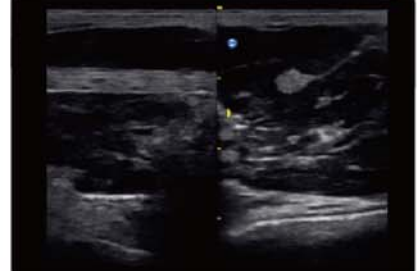
fetal hampan,B Mode



Fetal spine,B Mode



Uterus,B Mode



MSK,2B Mode



Thyroid,2B Mode



Carotid,PW Mode



Cardiac,PW Mode

Specification

Applications	Abdomen,OB/GYN,Vascular, Small parts(breast, testes, thyroid),Musculoskeletal Conventional & Superficial, Pediatric, Basic Cardiac
Imaging technologies	i-Image,SRA,Compound imaging,THI
Display Modes	B, B/B, 4B, M, B/M,PW
Gray Scale	256 Levels
Scanning Depth	240mm Max (depend on the probe types)
Probe Frequency	2.5 MHz - 11.0 MHz (Depend on the probe)
Cine Loop	256 frames
Zoom	4 steps
Software Packages	Dedicated measurement package:General , OB/GYN,URO, Cardiac,vascular,small parts
Archives Management	Patient information management, images record, exam report.
Power Supply	AC 100V-240V, 50Hz- 60Hz
Standard Configuration	Main unit , 2 probe connectors, 3 USB ports,VGA port ,Video port ,LAN port, Full Screen Display Mode,i-Image,Chroma ,SRA,Compound imaging,THI, 8G memory card,PW Mode,Built-in Battery (BT-2500)
Option	DICOM 3.0, Water-proof keyboard cover, Carrying Case (BG-100),Cart TR 9000 Support PC Printer*(HP 1010 / HP 1020 Plus / HP Pro P1102W / HP Pro 200 M251n) , Video Printer(SONY UP-X898MD)

