



# FDC6000

Color Doppler Ultrasound System  
[www.pioway.com](http://www.pioway.com)

Pioway Medical Lab Equipment Co., Ltd.



PORTABILITY WITH POWER



# FDC6000

Color Doppler Ultrasound System  
Portability with Power



## Keyboard



Ergonomic control panel, digital backlit control, rotary knob, 8 TGC gains, scan angle, pulse repetition frequency, baseline, calibration angle and etc

## Transducer

8EC4A



5.0Mhz 6.0Mhz 8.0Mhz

4V2S



2.0Mhz 3.0Mhz 3.5Mhz 4.5Mhz

5C2A



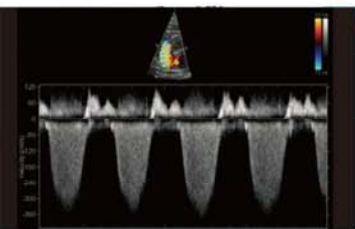
2.0Mhz 3.5Mhz 5.0Mhz

12L5A

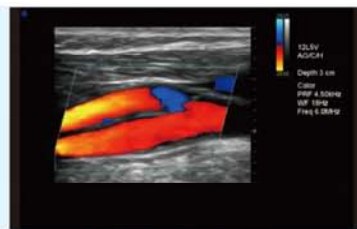


5.0Mhz 7.0Mhz 8.5Mhz 12.0Mhz

Versatile selectable probes, such as transvaginal probe, phase array probe, convex probe and high frequency linear probe



Frequency Spectral Doppler of Regurgitation



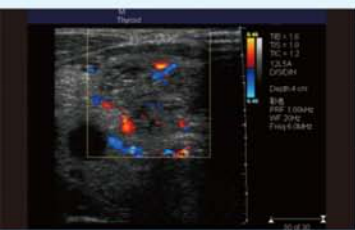
Carotid Bifurcation



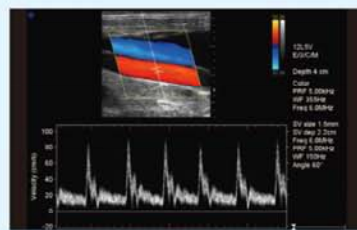
Vaginal Imaging In Color Doppler Mode



Reflux Dilated Long Saphenous Vein



Thyroid Imaging In Color Mode



Real-time Triplex Display



Cardiac Imaging In Doppler Color-mode



Twins Imaging In 2d-mode



# FDC6000

Color Doppler Ultrasound System

► PORTABILITY WITH POWER

**Applications** abdominal, OB/GYN, urology, cardiology, vessel, musculoskeletal, small parts

**Display Modes** B/BB/M/CD/PWD/CWD/DirPwr/Pwr

**Continuous Wave Doppler (CWD)** Expand hemodynamic diagnosis to professional cardiac application, especially congenital heart diseases, offering more clinical accuracy and reliability

**Triplex Display** Real-time triplex display B/Color Doppler/Pulsed Spectral Doppler (Three TGCs can be adjusted respectively)

**Standard Transducer** Convex 5C2A(2.0-5.0 MHz) Linear 12L5A(5.0-12.0 MHz)

**Optional Transducers** Transvaginal 8EC4A(4.0-8.0 MHz), Phased array 4V2S(2.0-4.0 MHz)

**High-precision Full Digital Image Technology** digital beam-forming/real-time continuous dynamic focusing/digital dynamic aperture/real-time dynamic apodization/real-time independent frequency conversion/adjustable focus position

**High Sensitivity Blood Image (HSI)** synchronous, homogeneous, clear, sufficient colorful blood image

**High-definition Frequency Spectrum Image (HDI)** recognizable sharp marginal blood frequency spectrum echo image

**Trapezoid Imaging(TI)** offer trapezoidal field of vision to enlarge the view angle of linear imaging

**Sector Expanding Image** offer a wider view of the organs

**Advanced Image Processing Technology** automatic image optimizing enhancement/smoothing filter/frame correlation/sharpen/pseudo-color/color priority/ grey level transformation /real-time zoom

**Tissue harmonic Imaging(THI)** suppress speckle noise, brighten image and improve the image quality

**Automatically-optimized parameters** adjust the parameters automatically according to the specific clinical diagnostic position so as to save the operating time consumption

**Powerful Measurement Software** versatile clinic-oriented measuring software package

**i-Station** versatile image format, such as AVI, JPG, TIF, BMP, SEQ, DICOM3.0 and super high medical report capacity storage, fast report management, such as preview, edit, print and transmission

**Port** USB2.0, RS-232, XGA, DICOM3.0, PAL-D, Network, DVD-R/W

**Annotation** Text/Body Mark and etc.

**Report** Automatic report generation

**Monitor** 12 inch medical LCD

**Panel** ergonomic panel