



i3

4D Color Doppler

Fast • Light • Quiet • Smart



Better Technologies



The revolutionary i3 provides you outstanding 2D images and fast 4D volume images, while the streamlined workflow makes your busy practices much easier and more efficient.

Better



Light

Light probe
Releases doctors from
scanning fatigue

Smart

Smart function
The latest technologies:
compound, i-Image, SRA, etc.
provide superb image

Quiet

Quiet probe
Vibration-free & Noise-free
probe allows better
care for mother and fetus

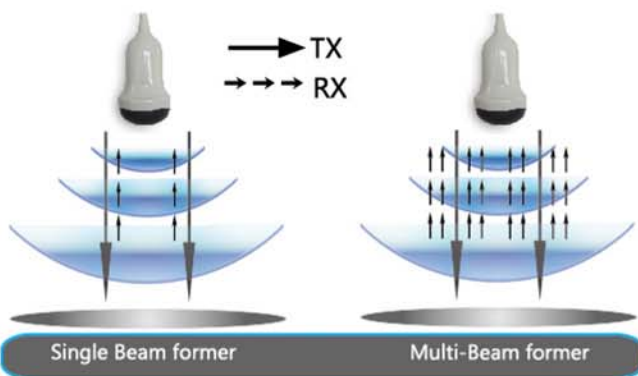
Fast

Fast speed
4D volume rate reveals
fetal movement in real
time

4T

Advanced Imaging Technologies

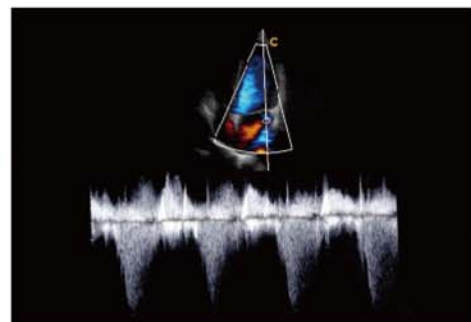
Multi-beam former technology



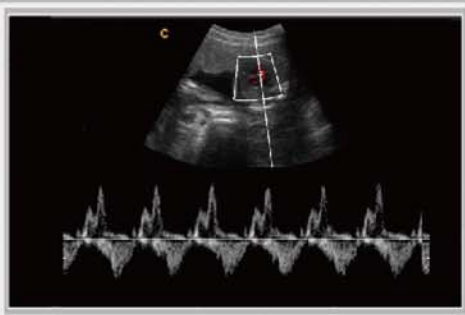
- Enhance signal processing speed
- Enhance time resolution
- Improve spatial resolution

Continuous Wave (CW) Doppler

CW is absolutely necessary for cardiac ultrasound to detect blood flow with high velocity and help doctors diagnose with more clinical information.



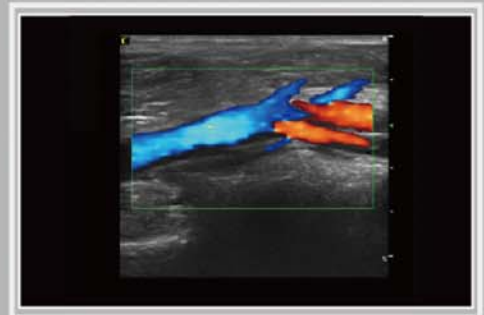
Clinical Value and Applications



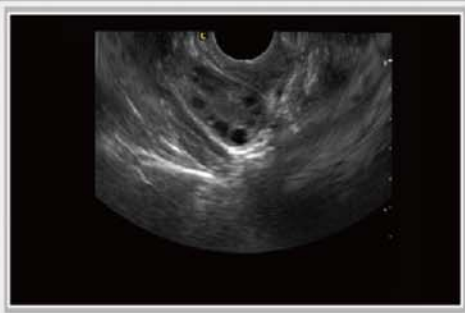
Fetal Heart, PW Mode



Umbilical Cord, CFM Mode



Popliteal Vein, CFM Mode



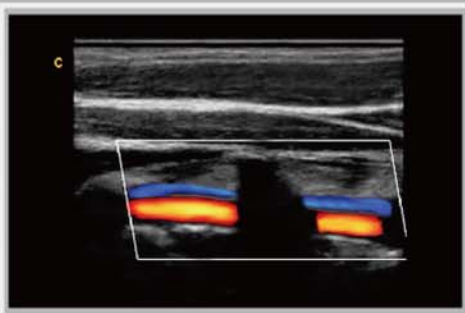
Ovary, B Mode



Early Pregnancy, B Mode



Fetal Face, 31 Weeks



Vertebral Artery, CFM Mode



Four Chambers View, ECG



Apical 4 Chambers, B Mode

Specifications

Imaging modes

- B, 2B, 4B, B/M, M
- CFM
- PW Mode
- Power Doppler / Directional PD
- Trapezoidal
- Real-time 4D (Option)
- Chroma B/PW
- CW (Option)

Probes

- Convex probe
- Linear probe
- Transvaginal probe
- Phased array probe
- Micro-Convex probe
- 4D Volume probe

Image processing technology

- THI
- Speckle Reduction Algorithm (SRA)
- Compound technology
- i-Image : image optimization software

Measurement & Report packages

- OB&GYN
- Vascular
- Urology
- Small parts
- Cardiac

Widely Clinical Applications

- Abdominal
- Obstetrics
- Gynecology
- Cardiac
- Vascular and Small parts
- Pediatric
- Urology
- Musculoskeletal

Standard configuration

Main unit, 19" LCD, 4 probe connectors, Hard disk (320GB), DVD-RW, 6 USB ports

Options

- 3.5MHz-5.3MHz Convex probe
- 5.0MHz-10.0MHz Linear probe
- 4.0MHz-10.7MHz Linear probe (60mm)
- 4.0MHz-10.0MHz Transvaginal probe
- 4.0MHz-10.7MHz Transvaginal probe
- 2.5MHz-4.0MHz Phased array probe
- 4.0MHz-10.7MHz Micro-Convex probe
- 2.5MHz-6.4MHz Micro-Convex probe (adult Cardiac)
- 3.5MHz-8.0MHz Micro-Convex
- CW
- ECG
- 4D package: including 2.5MHz-5.3MHz 4D volume probe, 4D software and 4D hardware module
- Video printer(SONY UP-X898MD),PC printer(HP Pro P1102W & HP Pro 200 M251n & Canon selphy cp910)
- DICOM 3.0
- i-Image: image optimization software
- Biopsy kit: for convex, linear,TV probe
- Foot-switch