

以下颜色可供选择



技术参数

管电压:	60KV	管电流:	1.5mA
曝光时间:	0.1~2s	频率:	30KHz
管焦点:	0.3mm × 0.3mm	从皮肤到束光筒的距离:	130mm
电池:	DC14.8V 6400mAh	额定功率:	60VA
充电输入电压:	AC100V~240V ± 10%	输出电压:	DC16.8V
环境温度:	5~40℃	相对湿度:	<75%RH
净重:	2.5kg	毛重:	4.8kg
包装尺寸	330 × 310 × 230 (mm)		

性能特点

- 该设备为直流高频便携式口腔 X 光机,体积小,重量轻,低剂量。
- 设备外壳表面有手动按钮,操作简单。所有组件集中安装在中央电脑主板上,绝缘真空、密封保护的构造使得机器性能更加卓越。
- 该设备有利于口腔治疗前对牙齿内部组织结构和根深等的诊断,是日常临床诊断不可缺少的,特别是口腔种植术方面。
- 电池使用寿命长,经久耐用。充满一次电可拍 500 张牙片,可完整充放电 1000 次。
- 可连接口腔数字成像系统。

Features

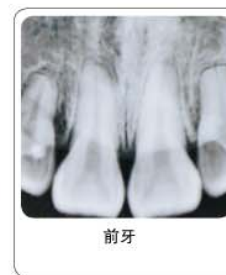
- The device is DC high frequency portable dental x-ray unit,small,light and nearly no radiation.
- There are manual buttons installed on the surface of shell,operate easily.All of the components are installed in the central PC board,insulation vacuum and sealed stereotype protection make its brilliant features.
- The unit mainly suitable for oral pre-treatment diagnosis of internal organization structure and root depth and so on,is indispensable in daily life clinic,especially for dental implant surgery.
- The battery is durability,it can take about five hundred images after full charged ,and it can be charged and discharged for one thousand times in its life.
- It can be connected with intra-oral digital x-ray imaging system.



尖牙



磨牙



前牙



种植体

Specifications

Tube voltage:	60KV	Tube current:	1.5mA
Exposure time:	0.1~2s	Frequency:	30KHz
Tube focus:	0.3mm × 0.3mm	The distance from skin to cone:	130mm
Battery:	DC14.8V 6400mAh	Rated power:	60VA
Charger input voltage:	AC100V~240V ± 10%	Output voltage:	DC16.8V
Ambient temperature:	5~40℃	Relative humidity:	<75%RH
Net weight:	2.5kg	Gross weight:	4.8kg
Package size:	330 × 310 × 230 (mm)		