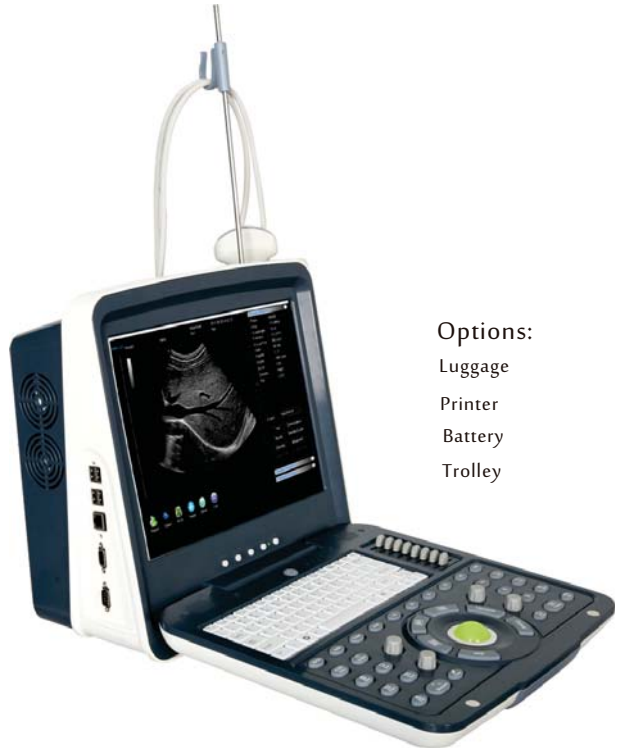


Accessories PW-190

Based on various transducers and the related accessories, we can offer ideal solutions for clinics and hospitals.



Options:
Luggage
Printer
Battery
Trolley

Multi-frequency Probes



3.5MHz Convex Probe



7.5MHz Linear Probe



5.0MHz Micro-convex Probe



6.5MHz Transvaginal Probe



7.5MHz Endorectal Probe

Tech for health



PW-190

Clear images | Special features | Superior structure



Pulse wave doppler

15 inches screen
3 probe sockets

PW-190

High cost-effective ultrasound with Windows platform and doppler & color.



Clear images

Based on the Pulse Inversion Tissue Harmonic Imaging (PITHI)^①, Speckle Reduction Imaging^② guarantee pleasant image presentation.

Special features

- Pulse wave doppler
- Color mode option
- One key recovery
- Probe-application smart navigation

Superior structure

- Three probe sockets
- Built-in battery
- Solid state disk (SSD)

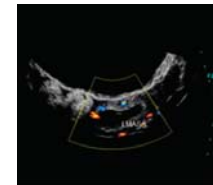
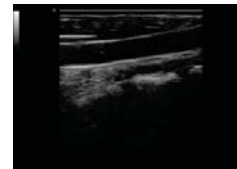
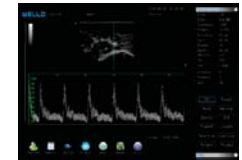
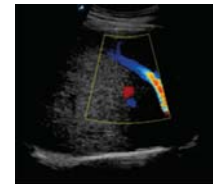
Abundant applications:

General, OB/GYN, abdomen, vascular, urology, small organs,MSK, superficial, basic cardiac, etc

Screen Size:	15 inches
Transducer ports:	3
Grey scale:	256
Scanning Depth:	40mm-250mm
Cine-loop:	1200 frames
SSD:	128 G
Local zoom:	10 times (real time and freeze)
Body marks:	98
Interfaces:	4 x USB 2.0, Video, VGA, Dicom 3.0, RS-232
Power supply:	AC 100V-240V,50Hz/60Hz/Rechargeable Battery
Weight:	9 KG
Packing dimension (in cm):	L 56 x W 48 x H 48
Image processing:	Image smoothing, THI, pseudo color, histogram, zoom, frameAVG,lineAVG, density, Gain, Focus distance, area, circumference,angle, volume,Stenosis diameter, stenosis area
2D measurement:	
PWD measurement:	RI, peak, RT, flow volume,PI,HR
Imaging modes:	B,B+D,B+M,M,2B,4B,PW, Color mode up/down,left/right,black&white
Image Conversion:	



Excellent Image Quality



^①Pulse Inversion harmonic Imaging: makes a dramatically cleaner and sharper contrast between the different structures of biologic tissues
^②Speckle reduction imaging: significantly makes the 2D images smoother and clearer